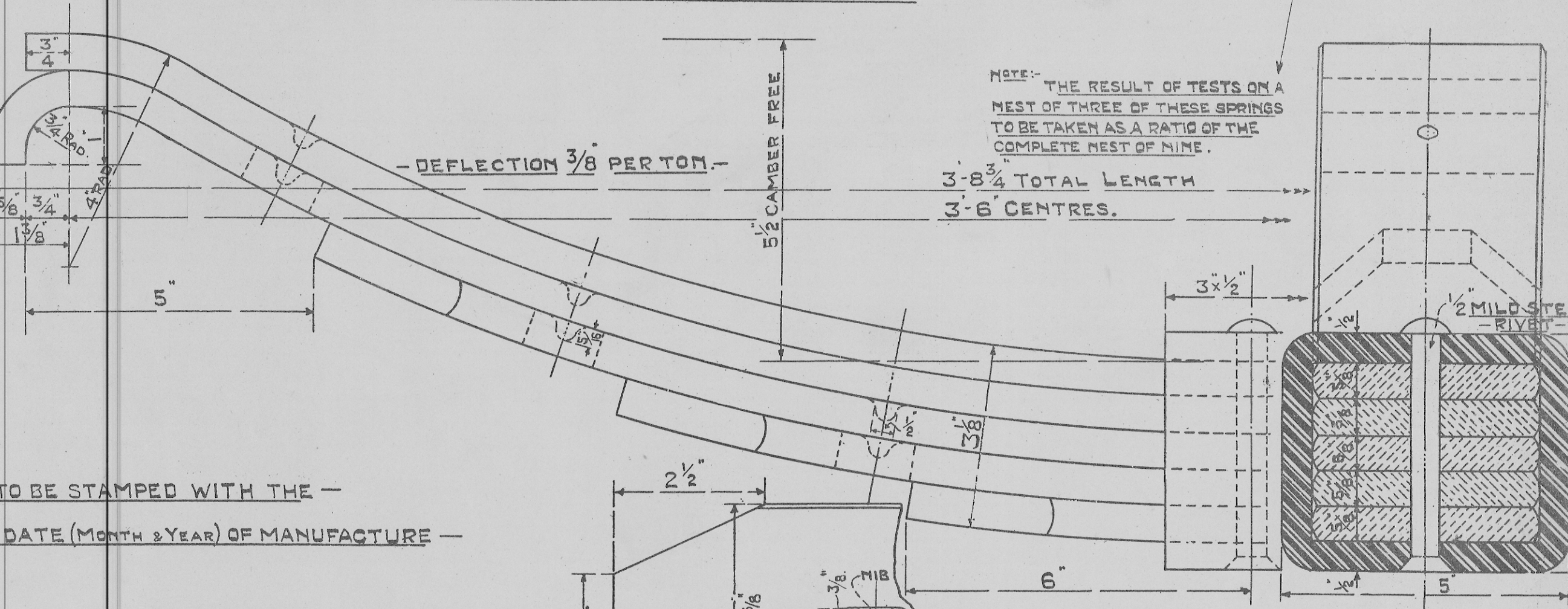
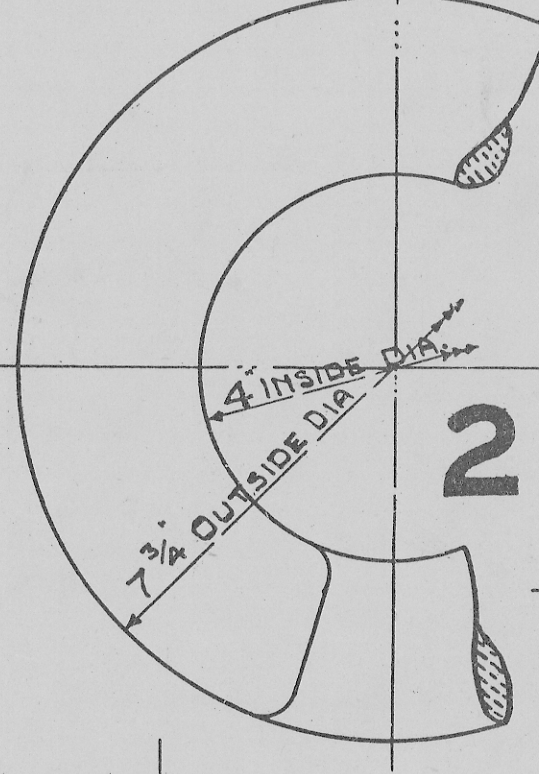
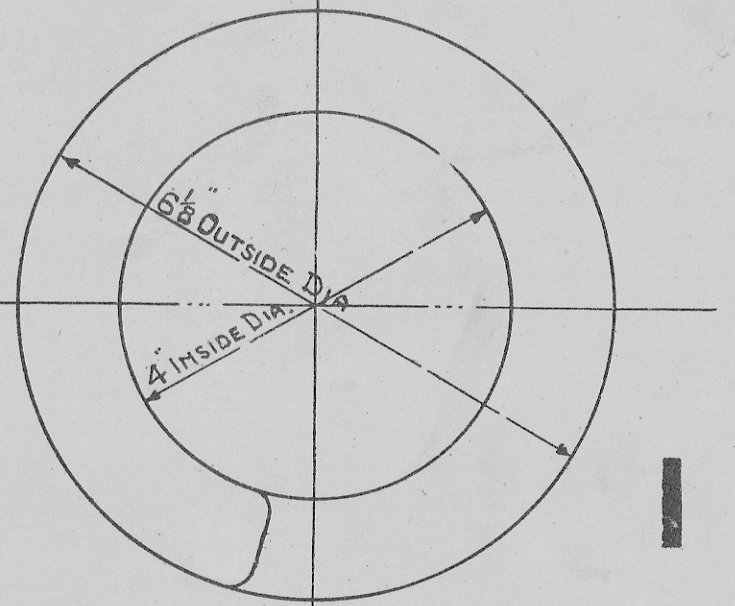


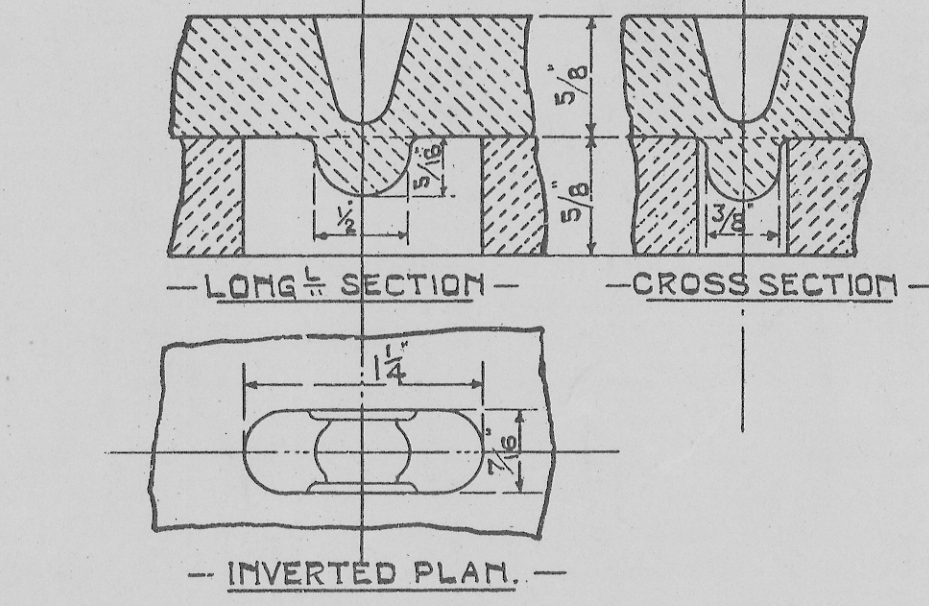
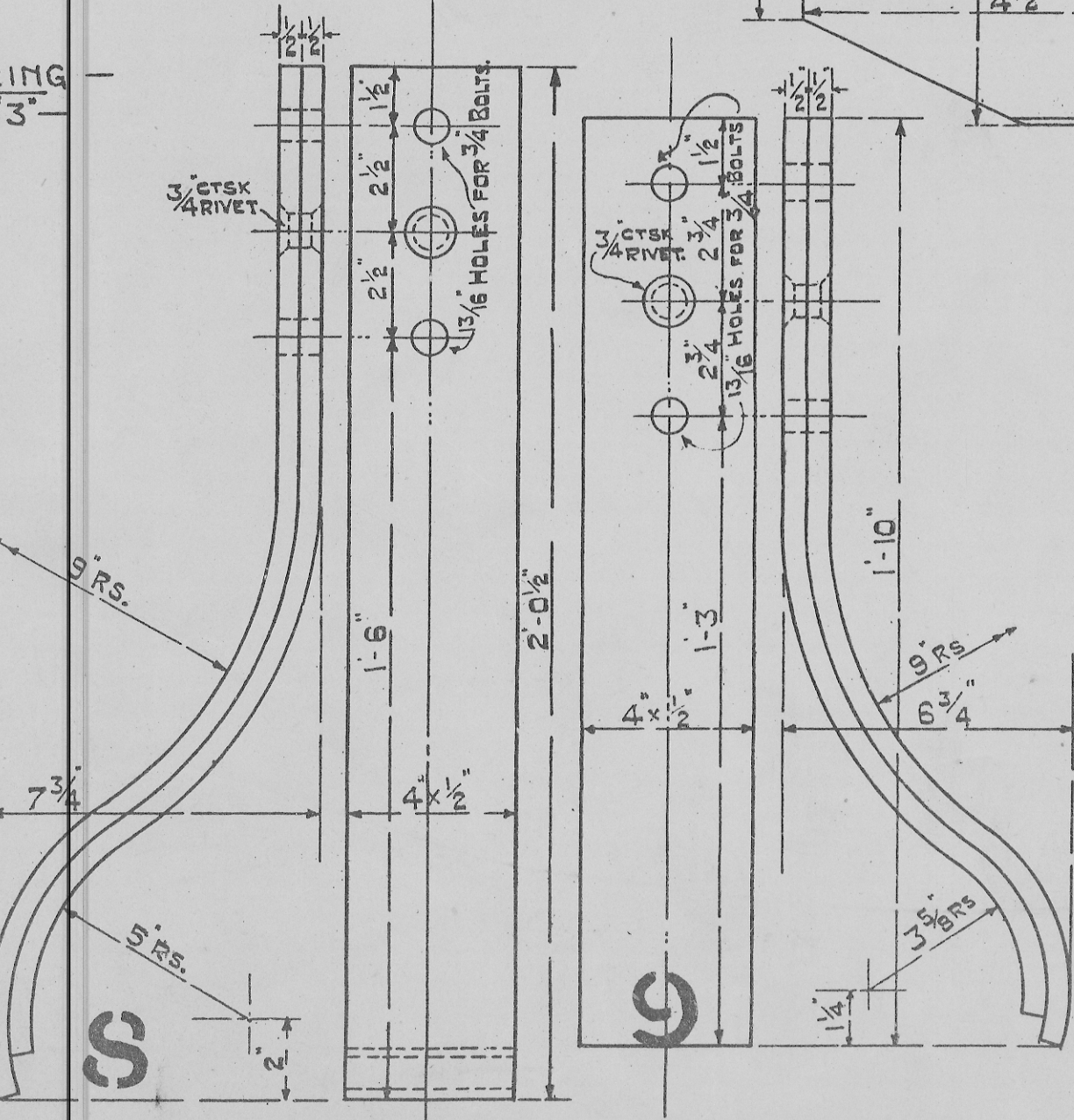
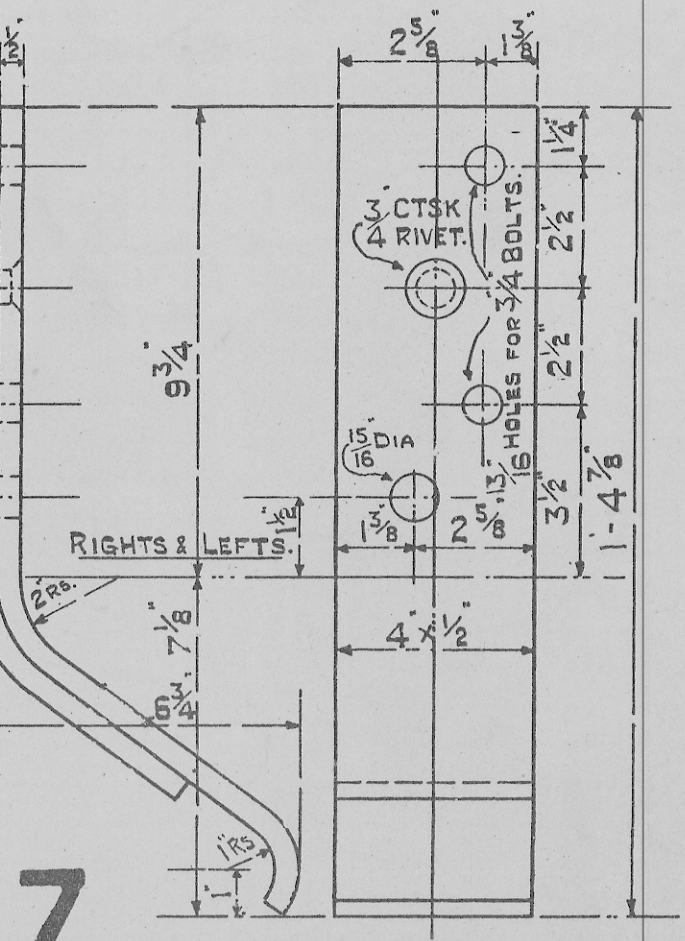
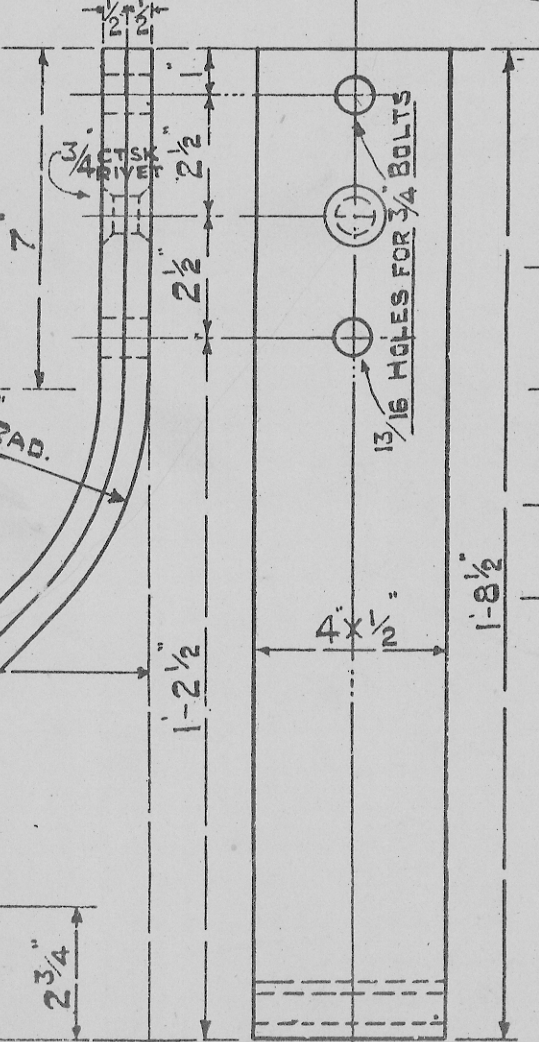
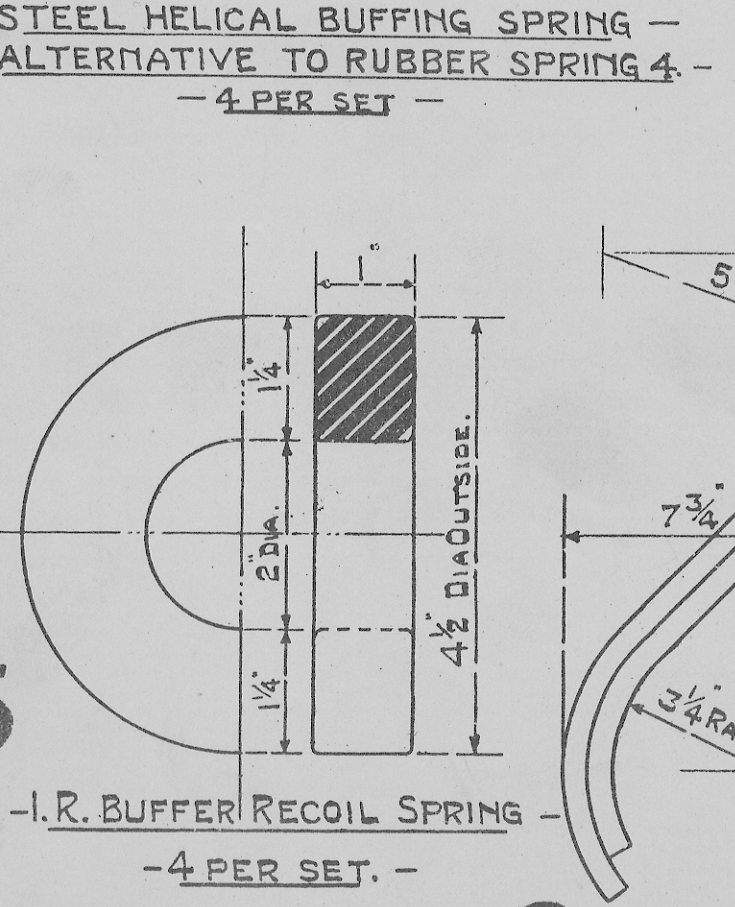
3 - I.R. DRAWSRING - 4 PER SET FOR ALL RUBBER SPRINGS. - WHEN USED WITH SPRING 2. - I.R. BUFFING SPRING - 9 PER NEST - 4 NESTS PER SET.



4 - DEFLECTION 3/8 PER TON. - 5 1/2 CAMBER FREE. - BEARING SPRING - 5 PLATES 4 x 5/8 - 4 PER SET.



5 - STEEL HELICAL BUFFING SPRING - ALTERNATIVE TO RUBBER SPRING 4 - 4 PER SET. 6 - STEEL HELICAL DRAWSRING - WITH ONE I.R. DRAWSRING 3 - 1 PER SET.



7 - I.R. BUFFER RECOIL SPRING - 4 PER SET. 8 - FOR STEEL UNDERFRAMES (GOODS) - 4 PER SET. 9 - FOR WOOD UNDERFRAMES (GOODS) - 2 PER SET. 10 - BEARING SPRING - 5 PLATES 4 x 5/8 - 4 PER SET. - LONG SECTION - CROSS SECTION - INVERTED PLAN. - STANDARD 12 TON WAGON. - DRAW, BUFFING, BEARING & DOOR SPRINGS, - FOR TIMBER OR METAL UNDERFRAMES. - GOODS OR MINERAL WAGONS. - SCALES 6 & 3 INS - 1 FOOT - APRIL 1923. D^o N^o 1018.