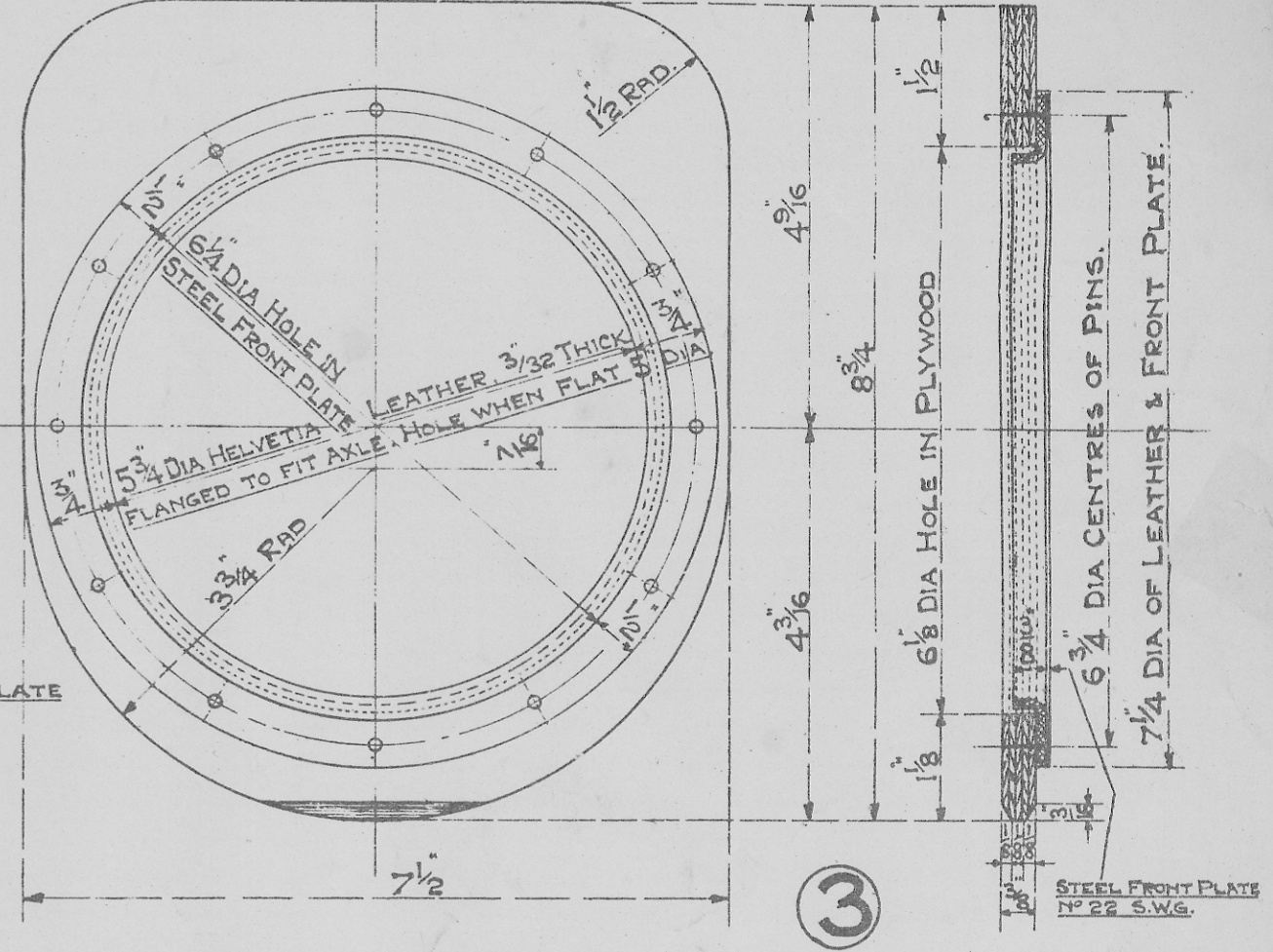
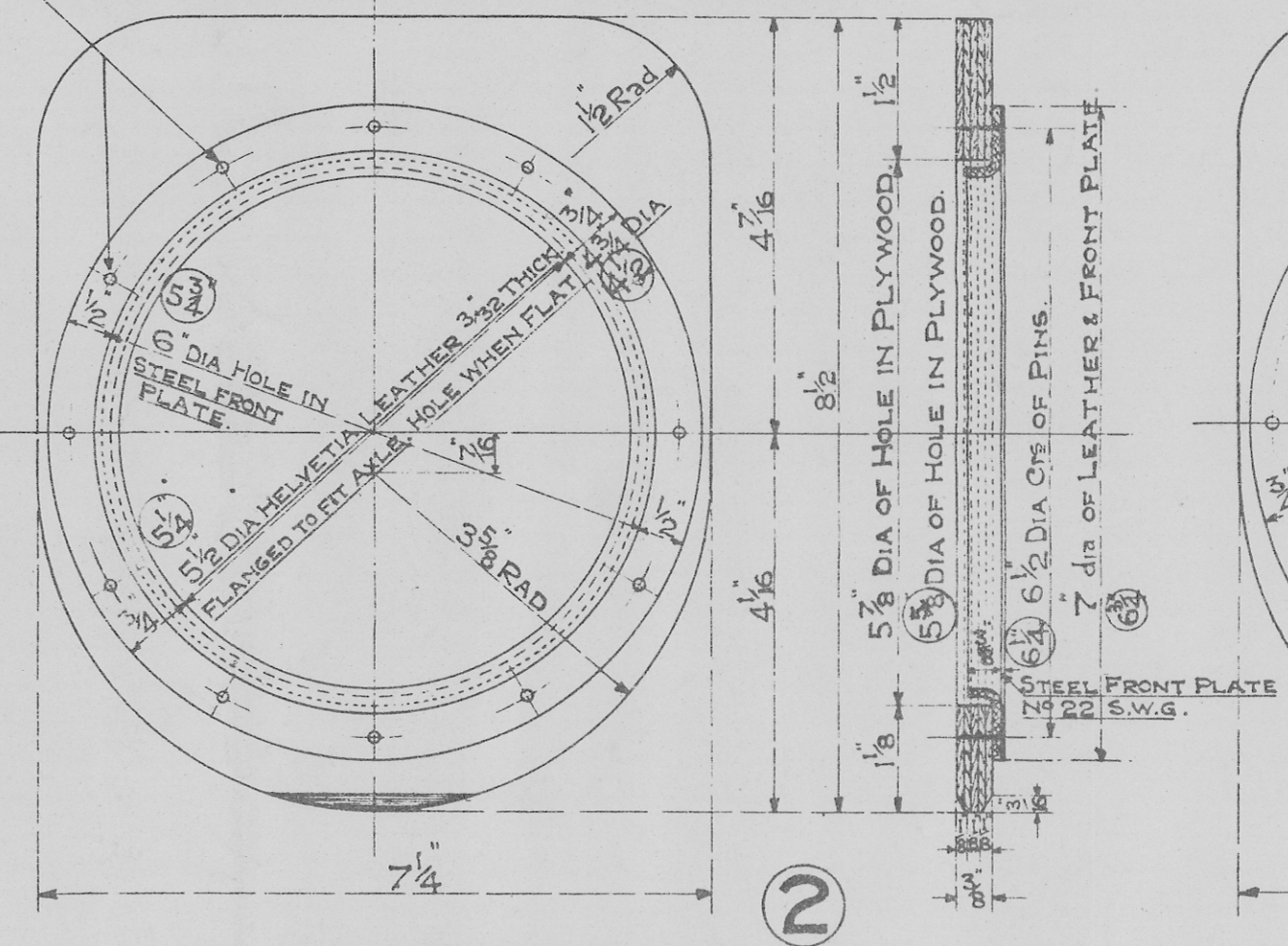


12 PANEL PINS 5/8 LONG, EVENLY SPACED, HEADS TO BE FLUSH WITH PLATE & POINTS TO BE CLINCHED.

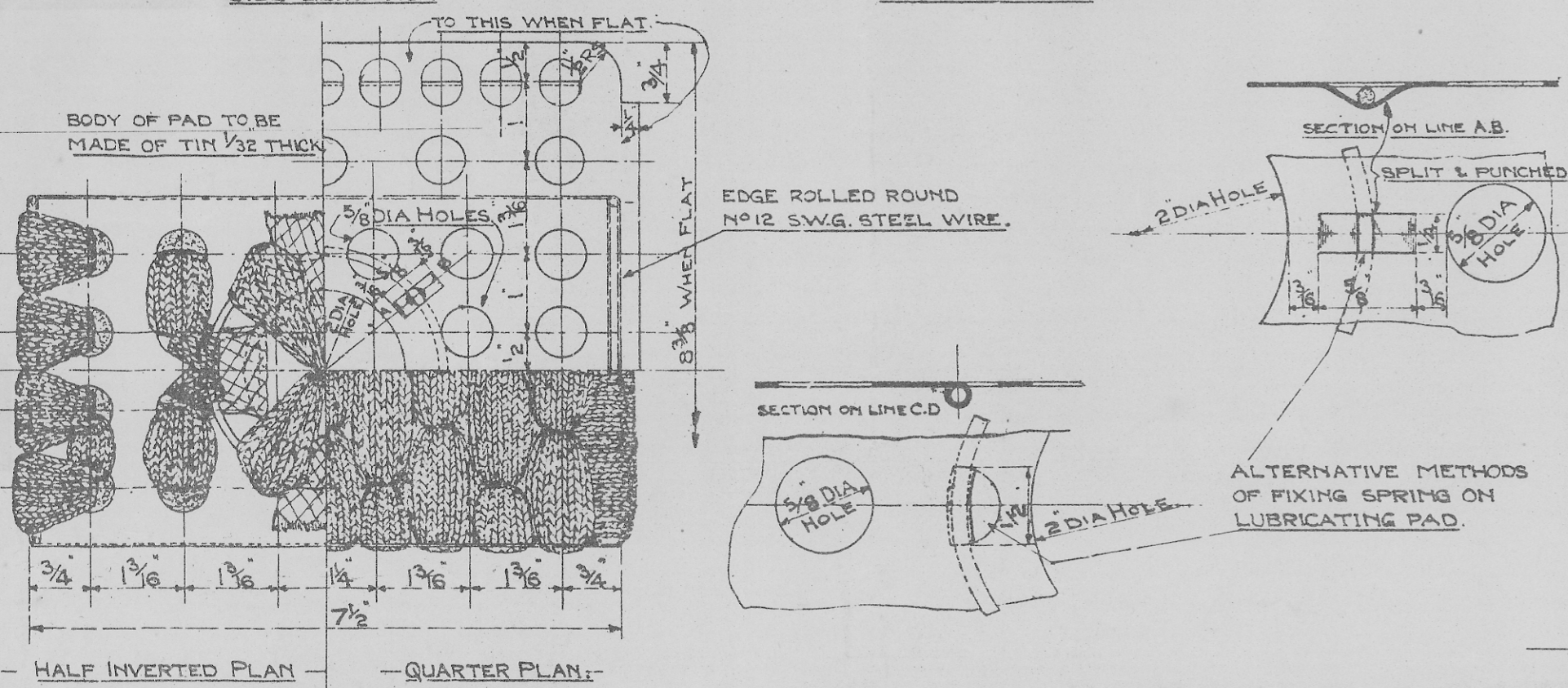
12 PANEL PINS 5/8 LONG, EVENLY SPACED, HEADS TO BE FLUSH WITH PLATE & POINTS TO BE CLINCHED.



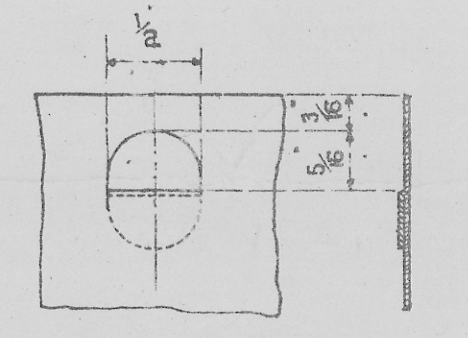
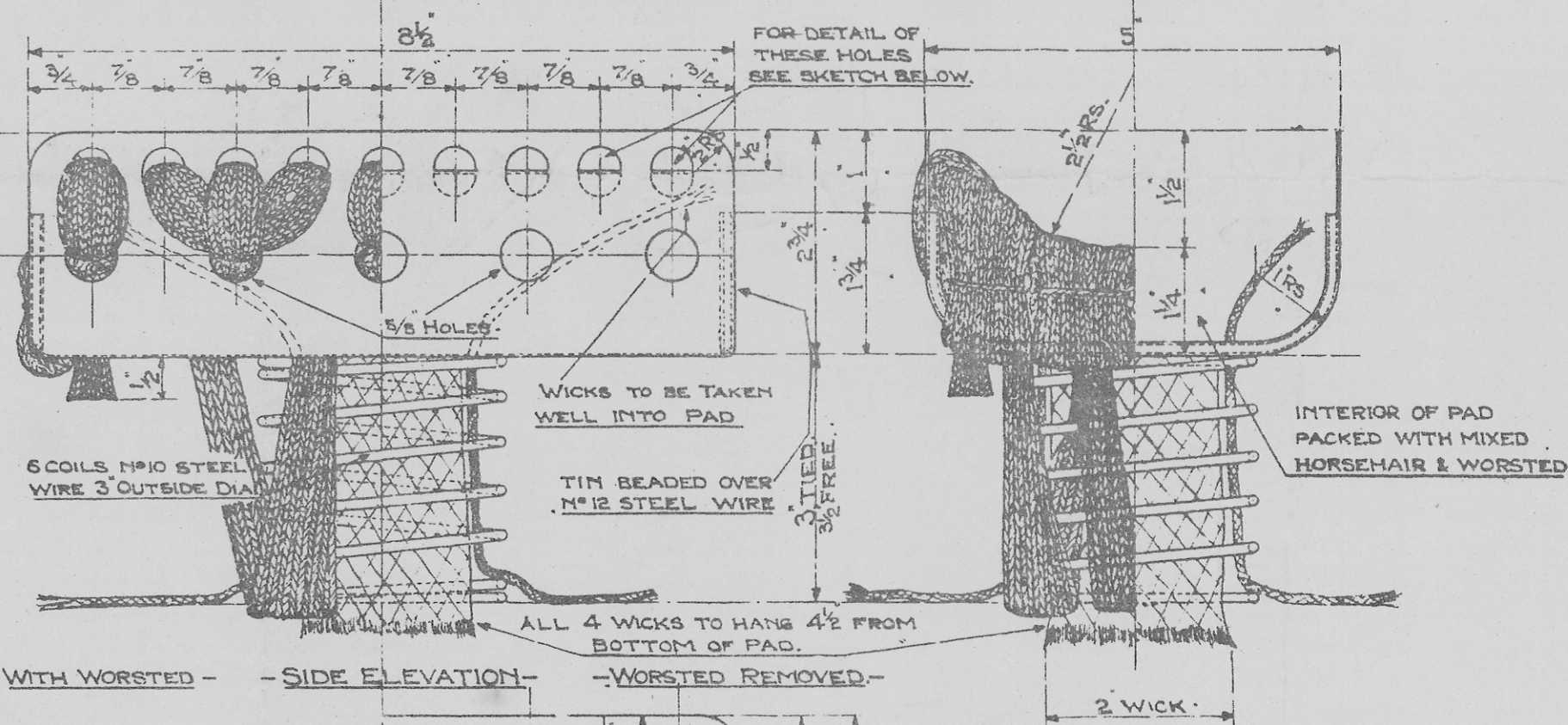
— STANDARD 12 TON WAGON —
— FIVE PLY DUST SHIELD HALF SIZE —

— STANDARD 12 & 14 TON TANK WAGONS —
— FIVE PLY DUST SHIELD — HALF SIZE —

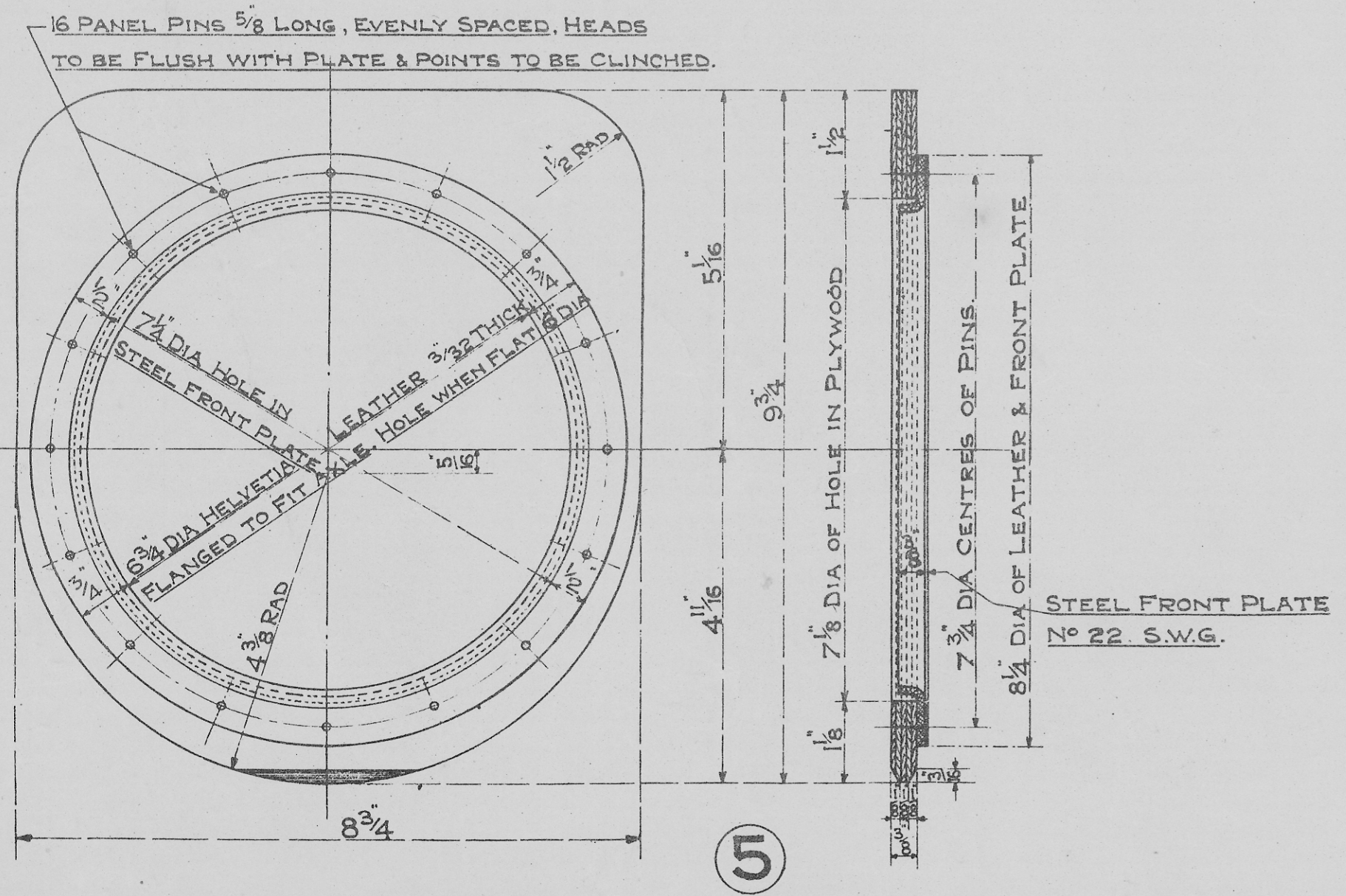
NOTE: THIS SHIELD ALSO TO BE USED FOR STANDARD 8 & 10 TON WAGON AXLE BOXES, DRG. 189 WITH THE EXCEPTION THAT RINGED DIMENSIONS MUST BE WORKED TO, ALL OTHERS REMAIN UNALTERED.



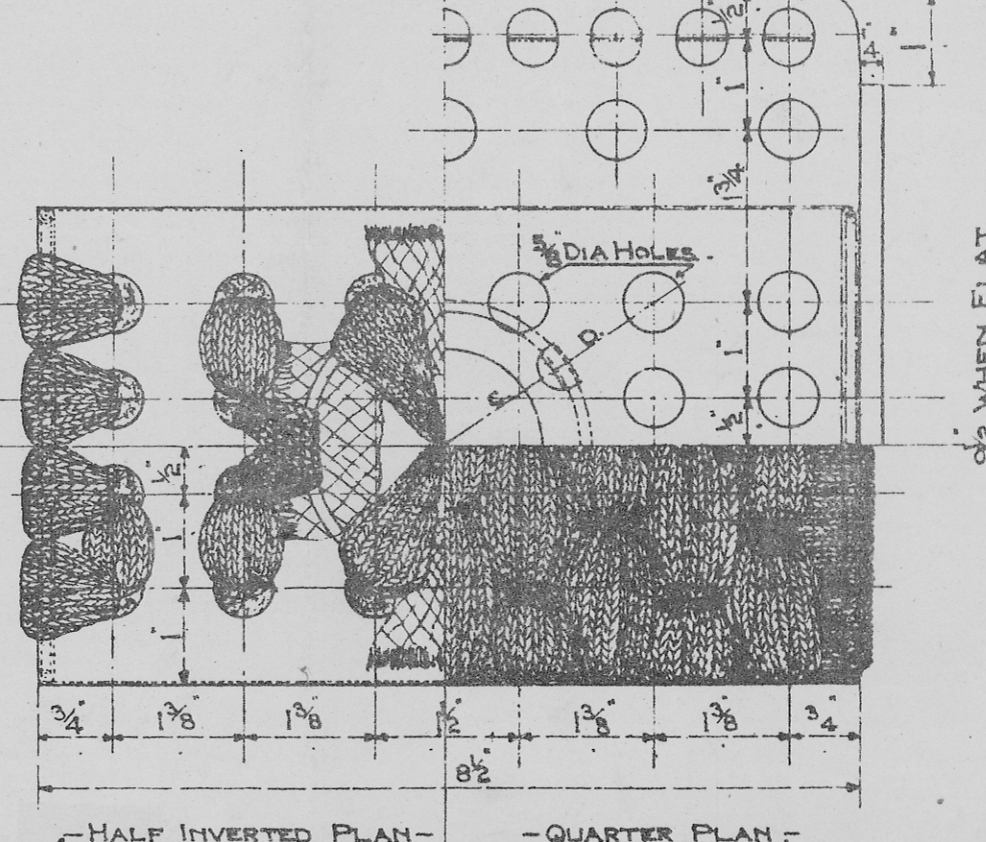
— STANDARD 12 TON WAGON & 10, 12 OR 14 TON TANK WAGONS. —
— 9" x 4 1/4" OR 4 1/2" JOURNALS. — LUBRICATING PAD. —



DETAIL FOR TOP ROW OF HOLES IN SIDE ELEVATION: — FULL SIZE. —



— STANDARD 20 TON MINERAL & TANK WAGONS —
— FIVE PLY DUST SHIELD — HALF SIZE —



— STANDARD 20 TON MINERAL WAGON OR 20 TON TANK WAGON. —
— 10" x 5" JOURNALS. — LUBRICATING PAD. —

NOTES:—

1. DUSTSHIELDS, ITEMS 2, 3 & 5, TO BE OF BIRCHWOOD 5 PLY OR EQUAL QUALITY, & CEMENT USED IN THE MANUFACTURE OF PLYWOOD MUST BE INSOLUBLE IN LUBRICATING OIL.
2. PRESSURE OF LUBRICATING PADS AGAINST JOURNALS NOT TO BE LESS THAN 5 LBS. NOR MORE THAN 6 LBS.
3. DRAWING NO. 1023 IS HEREBY CANCELLED AND ALSO CERTAIN DIMENSIONS RELATING TO THESE FITTINGS ON DRAWINGS NOS. 189, 1022, 1031, 1108, 1215 AND 1309.

STANDARD MINERAL, GOODS AND TANK WAGONS.
LUBRICATING PADS AND DUST SHIELDS FOR AXLEBOXES.
HALF SIZE.
OCTOBER 1926. DRG. No. 1036.